

Great for ages 3+

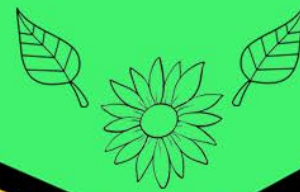
# I SPY ... nature

PEOPLE'S HISTORY MUSEUM



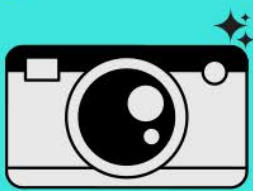
Lots of the banners in the museum are decorated with patterns and images inspired by nature.

Look in your garden or go for a walk and see how many you can find.



PEOPLE'S HISTORY MUSEUM

PEOPLE'S HISTORY MUSEUM



Take a photo



Draw your discoveries



Collect as many as you can in a homemade treasure box

## For everyone

These are things that you are likely to see throughout the year.



## For a challenge

These are things that you are less likely to see throughout the year.



PEOPLE'S  
HISTORY  
MUSEUM

PEOPLE'S  
HISTORY  
MUSEUM

PEOPLE'S  
HISTORY  
MUSEUM



How many did you find?

Lets take a closer look at the banners they link to ...

We want to see your photos,  
drawings and treasure boxes!  
Tag us on  
Instagram, Twitter and Facebook  
@PHMMcr



PEOPLE'S  
HISTORY  
MUSEUM

PEOPLE'S  
HISTORY  
MUSEUM

# flower

Primrose League  
Stretford Habitation  
No. 1861 banner,  
around 1900

How many lions can  
you see on the  
banner?



# leaf

Dockers Union  
Export Branch  
banner, 1890s

What animal is the  
person holding?

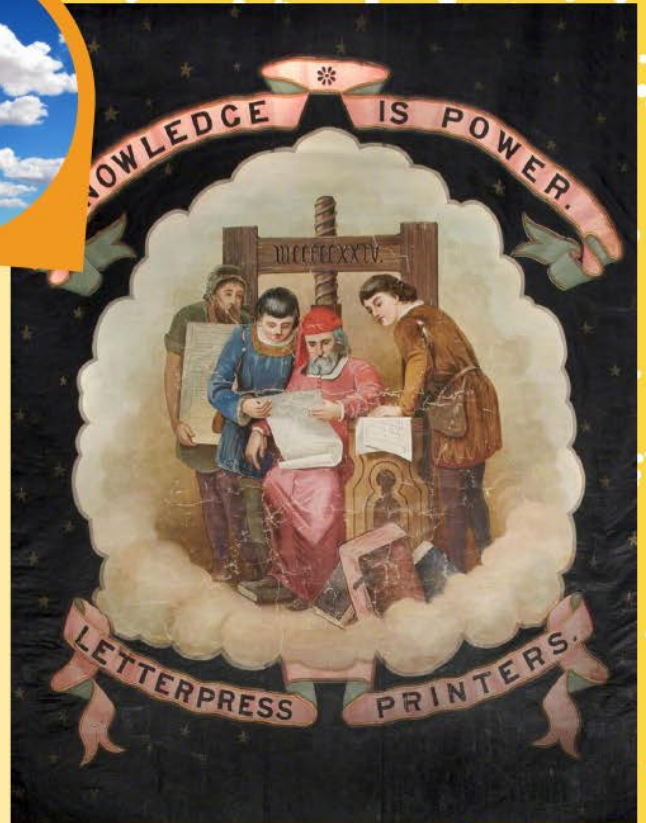




# cloud

Typographical Association,  
Preston Branch banner,  
1849 - 1882

Can you see the stars in  
the background?



# bundle of sticks

Tin Plate Workers' Liverpool banner, 1821

Can you see something that belongs on a boat?





# bird

Greater Manchester Campaign for Nuclear Disarmament (CND) banner, 1980s



Which square has a rainbow in it?



# tree

Central Labour College banner, 1912

What do you think is growing on the trees on this banner?

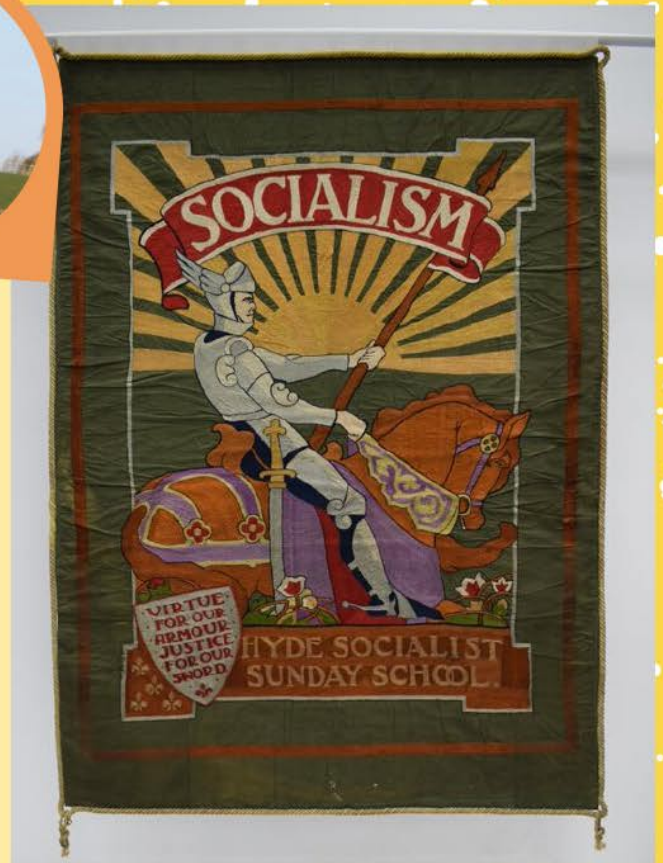




# horse

Hyde Socialist Sunday School banner, 1930s

Looking at the sun, what time of day do you think it might be in this picture?



# acorn

Central Committee, Communist Party of Great Britain (CPGB) banner, around 1930



Can you spot the boat?  
Where do you think it is heading?





# rainbow

Redhill Women's  
Co-operative Guild  
banner, around 1900

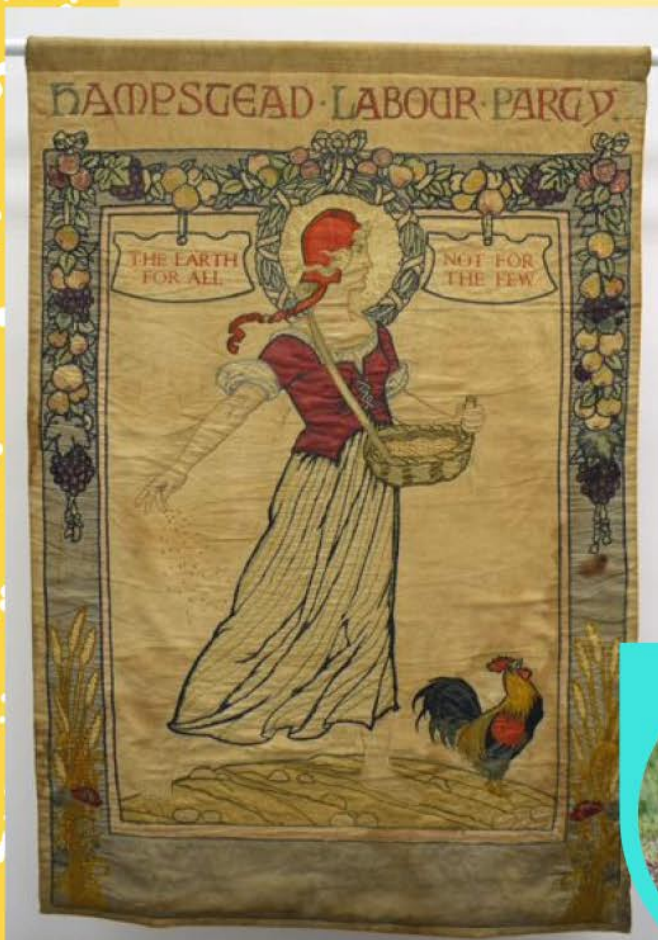
Can you sing the  
Rainbow Song?



# chicken / cockerel

Hampstead Labour Party  
banner, around 1920

What different kinds of  
fruit can you see?





# water

Our Children's World  
Held in Our Hands  
banner, 1996

Can you name all  
the different animals  
on this banner?



# bee

National Winding  
and General  
Engineers Society  
banner, 1926

Where do bee's live?  
Can you spot their  
home?

