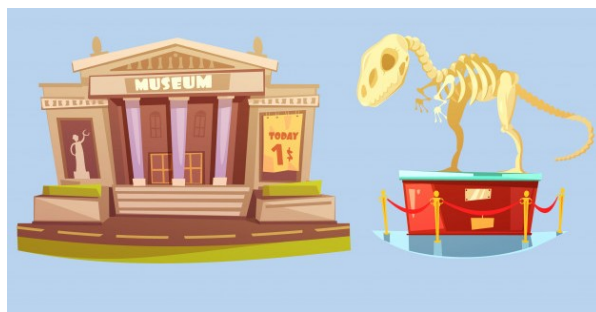


Explore Manchester Newsletter #2



Hello, and welcome. This newsletter contains information about museums, galleries and arts and culture activities in Manchester. These venues are re-opening after lockdown and are welcoming visitors back. There are still COVID restrictions in place that may limit access to these venues, many require you to pre-book and limit numbers attending to keep everyone safe so please check before you visit—we don't want you to make a wasted journey!

virtual visit ideas

Lots of museums, galleries and arts and culture venues are still offering online activities at the moment. On the next page we have listed some of the ideas we have found.

A website with 30 virtual exhibitions:

www.stayathomehabits.com/virtual-tours-kids/

Other ideas:

<https://www.nationalgallery.org.uk/visiting/virtual-tours>

<https://www.npg.org.uk/visit/360-gallery-views>

<https://secretldn.com/virtual-museums-exhibitions-tours-london>

<https://www.goodto.com/family/best-virtual-tours-for-kids-536089>

<https://www.familybreakfinder.co.uk/virtual-museum-tours-for-kids>



By 4CT Limited for:



A newsletter for little explorers to find out more about museums, galleries and arts and culture activities in Manchester.

Inside this issue:

Your suggestions	2
National Football Museum	3
Quiz Answers	3
Re-openings	4

4CT
Limited



Department
for Education

your ideas—Places to visit

In the last edition we asked for your ideas of tried and tested places to visit and things to do.

caroline suggested:

Nature Hunting at Chorlton Waterpark.

The park has a decent and accessible path the entire way round the lake (distance to do a lap is 1 mile). Has a play park that is directly facing the most incredible swan nest!

The park is over flowing with babies - coots, ducklings, goslings and cygnets along with their grown ups. Alongside them is an abundance of plant life - wild garlic, wild primulas, huge areas of bluebells and if families are looking for a quieter time at dusk you'll experience the bats flying around.

Thank you for the lovely photograph!

We are sending you an explorer pack to help next time you go Nature Hunting.



Taheera suggested:



Museum of Transport in Cheetham Hill

A good place to visit with lots of transport and old buses.

<https://motgm.uk/>

There are photographs of what to expect on your visit and information about COVID on the website.

Check opening hours before you visit

Open weekends from Saturday 5 June 2021



Museum of Transport,
Boyle Street, Cheetham,
Manchester M8 8UW

0161-205-2122
[email\(at\)gmts.co.uk](mailto:email(at)gmts.co.uk)

There is a charge for adults (£5) and different charges may apply on event days.

Thanks Taheera—another great suggestion—an explorer backpack is also on its way to you!

national football museum

The National Football Museum (in the city centre near to Victoria Station) has some great resources and information to help you with your visit. Alongside the newsletter we have attached their 'visual story' so you can look at what you can expect from your visit. They also have a YouTube video with visitor information:

<https://www.youtube.com/watch?v=tb3IzsYevtM>

Remember it is free to visit the National Football Museum if you are a Manchester resident but you must book your visit in advance.

<https://www.nationalfootballmuseum.com/plan-your-visit/>



The football museum have supplied us with two free activity sheets—these are attached to your newsletter email.



Manchester General Knowledge Quiz Questions—answers from the first newsletter

1. Which civilisation established the first settlement in Manchester? **Roman**
2. How are people living in Manchester called? **Mancunian**
3. Which scientist (from Manchester) decrypted Enigma? **Sir Alan Turing**
4. What is the symbol of Manchester? **Worker Bee**
5. What famous British newspaper was founded in Manchester in 1821? **The Manchester Guardian**

For more Manchester quiz questions:

<https://www.manchestereveningnews.co.uk/whats-on/food-drink-news/manchester-quiz-questions-and-answers-18186760>

<https://www.manchestereveningnews.co.uk/whats-on/family-kids-news/manchester-general-knowledge-quiz-2021-19724678>

Culture is BACK!

From May 17, culture in Manchester is back and there is going to be so much to enjoy!

Go to visitmanchester.com/culture and you'll find reopening museums, galleries and libraries, theatre performances and film, music and dance and a special section with events just for families.

Whether you're a regular attender or a first-time visitor there will be something for you among Manchester's reopening programme, and this summer also sees a fantastic calendar of events in Manchester's squares and open spaces. Check out the website and let culture set you free!



Z-arts—back open!

Every day is a good day for visiting Z-arts! You might be coming to a Bright Sparks class, attending a workshop, watching a show, or enjoying lunch in [Z-café](#). Whatever the reason for your trip, you can find all the information you need to know right here.

[Your trip - visiting Z-arts | Z-arts | Hulme, Manchester](#)

Z-arts, 335 Stretford Road, Hulme, M15 5ZA [0161 226 1912](tel:01612261912)

simply cycling

Welcome to Simply Cycling!

Your all ability cycling community

Have fun, make friends, get fit!

Pre-booking essential! www.simply-cycling.org

