



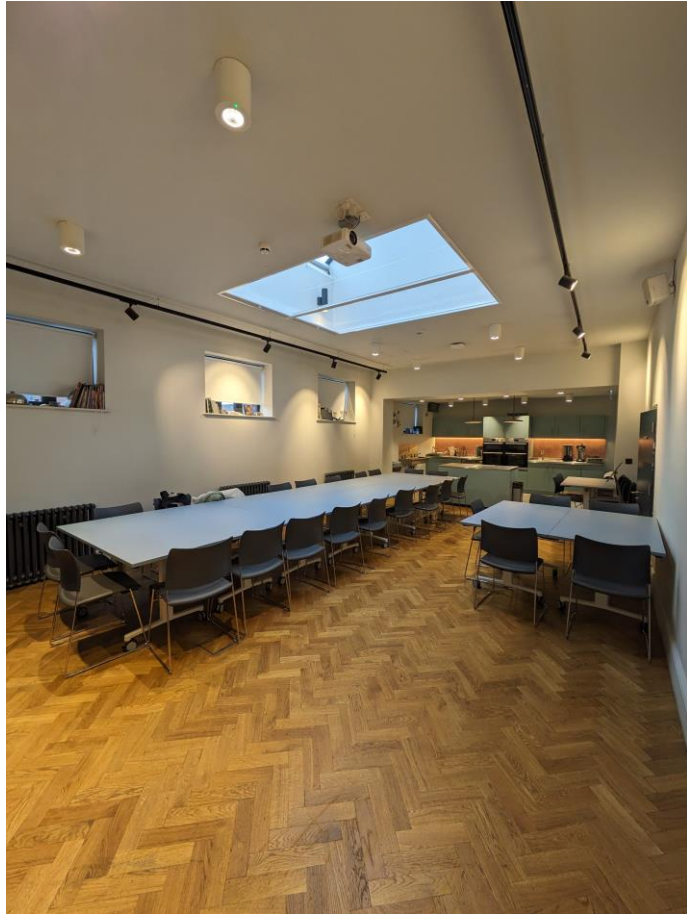
Manchester Jewish Museum Social Story



This is the main entrance of the museum. You can access it using the stairs or a ramp. School groups do not usually use this entrance.



The school group entrance is to the right of the synagogue. Just head through the gate towards the Learning Studio door. Here, you will be greeted by a member of the team.



The Learning Studio has space for you to store your bags and coats. It also has a kitchen area to use for cooking and baking workshops.



If you follow the corridor outside the Learning Studio, you will find our front desk. A member of our team will be here to answer any questions.



There will also be a security guard at the front desk. They are happy to answer questions and respond to any issues.



You may see museum staff and volunteers wearing black t-shirts. They can tell you more about the museum, and help you find your way.



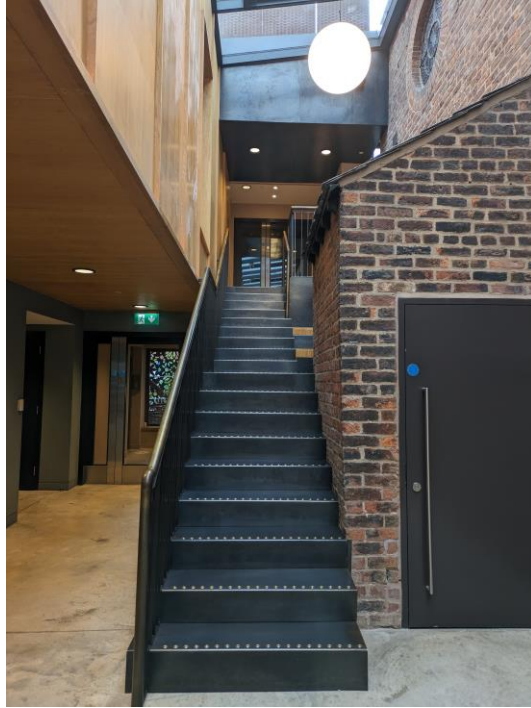
To the left of our front desk, you will find our café. This space can sometimes be a little noisy. Please ask a member of staff if you want to find somewhere quieter.



The museum shop is found beside the entrance. You are welcome to browse and pick up anything for sale, and to use the yellow seats.



Above the shop you can see a bridge. Visitors will use this to leave our gallery and enter the historic synagogue.



The museum exhibition is on the first floor. You can access it using the stairs or the lift. The lift is at the end of the corridor (to the left of the stairs).



Follow the corridor to the left of the staircase, and you will find toilets: mens, womens and an accessible toilet.



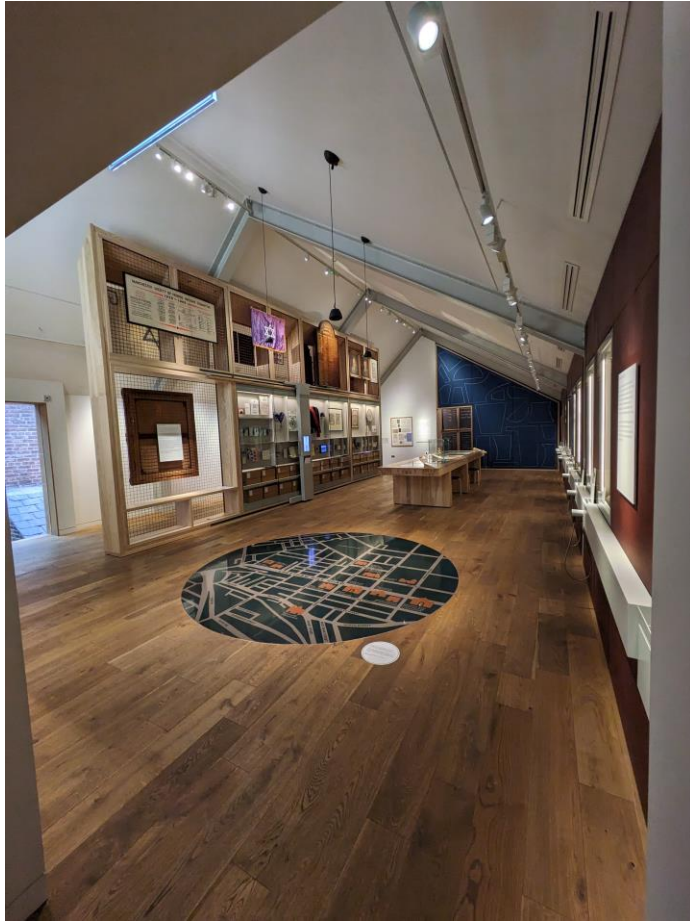
At the top of the stairs, you will also find an accessible toilet.



The first gallery is our Journeys gallery. The lights are quite dim, and you will hear voices playing from speakers in the left wall. You will also find listening pods attached to the walls. Just pick them up and press to your ear. No food or drink is allowed on the gallery.



Turning a corner, you will find a film playing on a loop. You can take a seat here and relax.



The next room contains our Identities and Communities galleries.

Our galleries do not usually get crowded. Ask a member of the team if you want a quiet space.

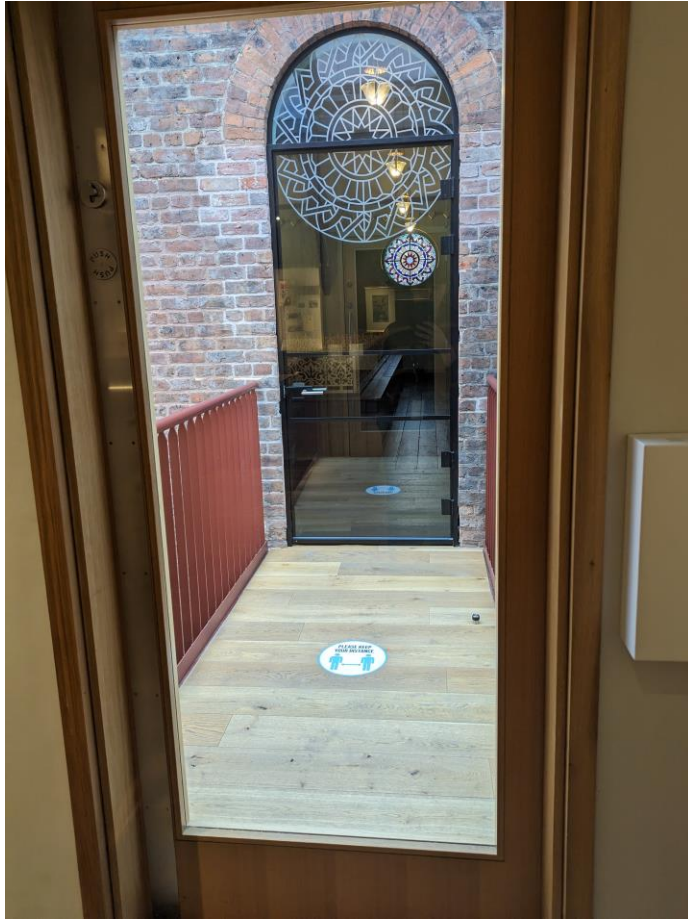


There are speakers on the ceiling playing voice recordings.

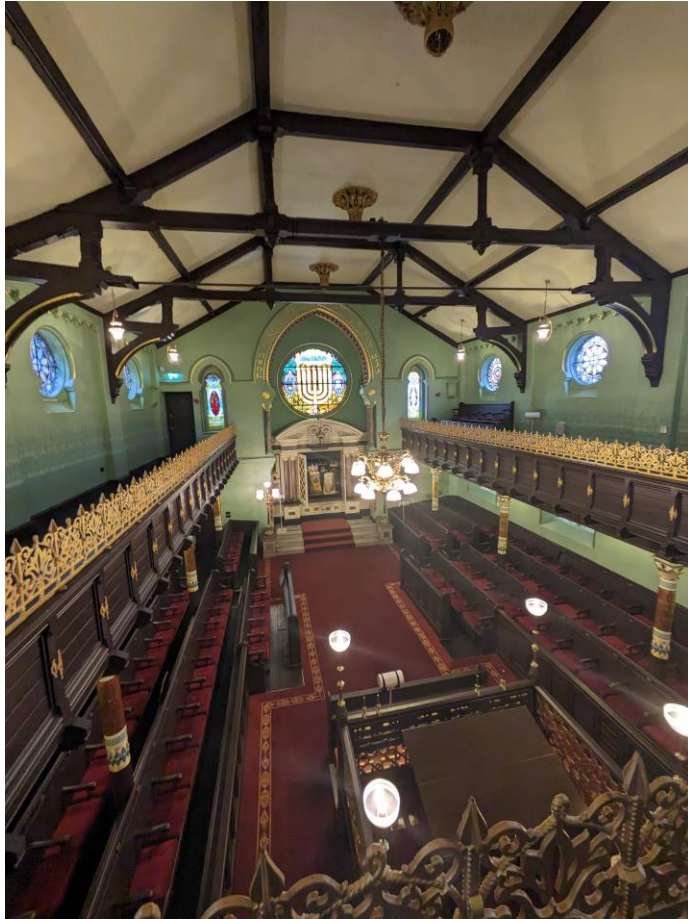
There are tablets, listening pods, and seats around the central table that you are welcome to use.



At the end of the space you will find this side room. Here there is more seating, plus tablets you can use to listen to oral histories.

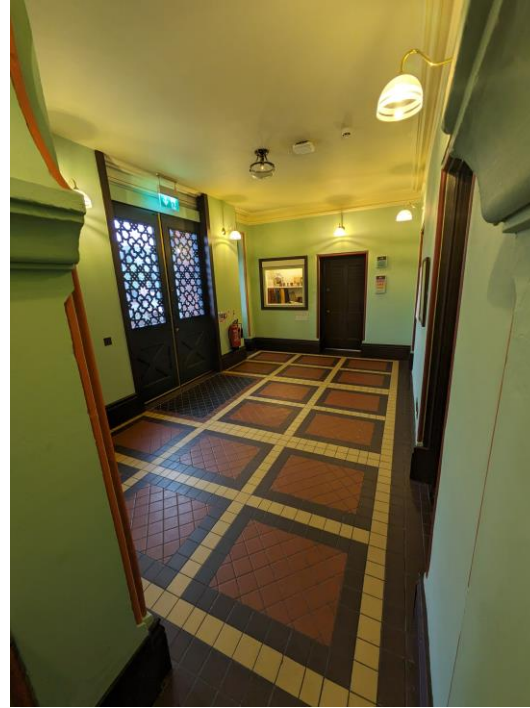


To exit the gallery and enter our historic synagogue, you will cross this bridge. If you want to avoid the bridge, you can head back downstairs the way you came. One of our team can then direct you to the synagogue another way.

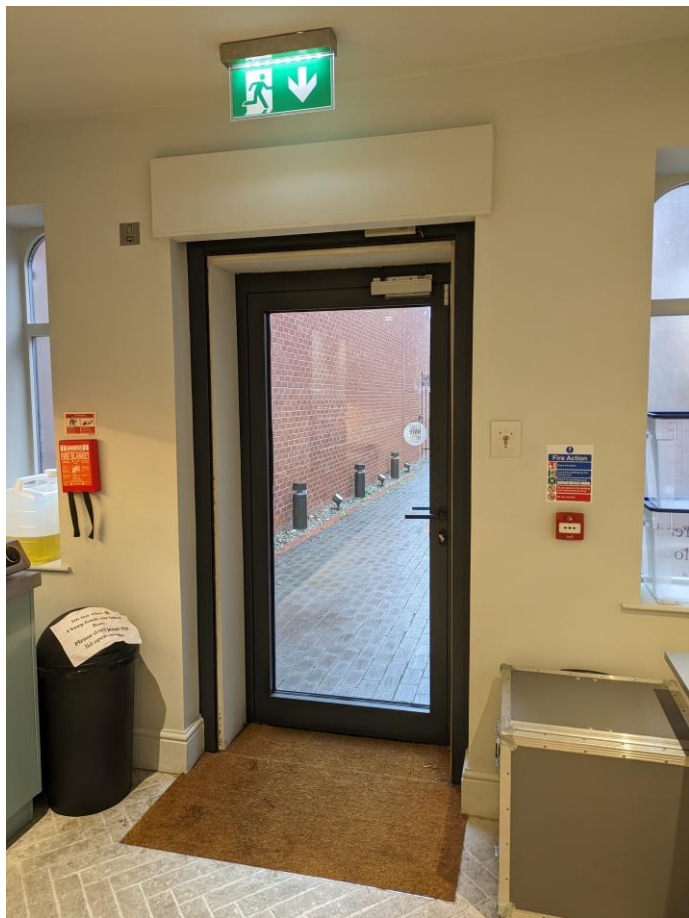


Our historic synagogue is no longer an active site of worship, so you are welcome to explore at your leisure. You can sit in the seats and listen to our listening pods.

No food or drink is allowed in the historic synagogue.



To head downstairs in the synagogue, use the door with the sign beside it. You will come to the original synagogue entrance. Turn right to enter the synagogue again, or go straight ahead to return to the museum entrance.



When it is time to leave, you will exit via the Learning Studio. Simply head back out of the gate.

We hope you enjoy your visit to the museum!